



ANIXIS Password Reset Client

Administrator's Guide

V2.6



© Copyright 2003 - 2009 ANIXIS. All rights reserved.

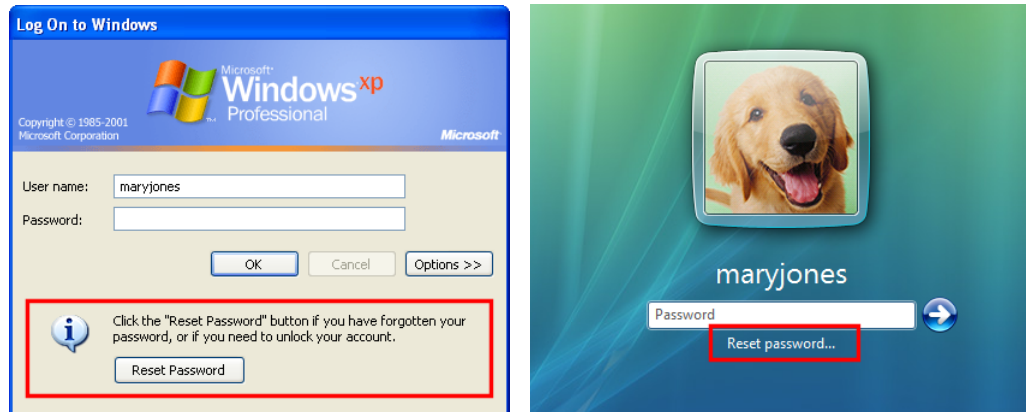
ANIXIS, ANIXIS Password Reset, and ANIXIS Password Reset Client are trademarks of ANIXIS. Microsoft, Microsoft Management Console, Windows Installer, Windows, Windows NT, Windows 2000, Windows XP, Windows Server 2003, Windows Vista, Windows Server 2008, and Windows 7 are either registered trademarks or trademarks of Microsoft Corporation. Other product and company names may be the trademarks of their respective owners.

Table of Contents

- The Password Reset Client..... 1
 - Installing the PRC 2
 - Configuring the PRC 5
 - Licensing the PRC 8
 - Automatically Closing the PRC Browser Window 10
- License Agreement 11

The Password Reset Client

The Password Reset Client allows users to securely reset their password from the Windows Logon and Unlock Computer dialogs. Users simply click the **Reset Password** button or command link to access the ANIXIS Password Reset system.



The Password Reset Client does not install a new GINA DLL or modify any Windows system files.

In Windows Vista and later, clicking the **Reset password...** command link normally displays the Windows Password Reset Wizard. The wizard allows users to reset local (non-domain) account passwords. After the Password Reset Client is installed, Windows displays the Password Reset Wizard for local user accounts and the Password Reset Client browser window for domain user accounts.

To maintain consistency with Microsoft's user interface in Windows Vista and later, the **Reset password...** command link is only displayed after the user enters an incorrect password.

Installing the PRC

The Password Reset Client is designed to run on Windows 2000, XP, 2003, Vista, 2008, and 7. The PRC is also compatible with Windows Terminal Services and Remote Desktop Connection on these operating systems.

System Requirements

- Windows 2000, XP*, 2003*, 2003 R2*, Vista*, 2008*, 2008 R2, or 7*
* x86 and x64 editions.
- 1 Megabyte free disk space.
- 128 Kilobytes free RAM (per session if using Terminal Services).

You can install the PRC manually if you only have a few computers, but it is easier to perform an automated installation if you have many computers. Follow the instructions below to perform an automated installation of the PRC with Group Policy.

Create a Distribution Point

A distribution point can either be a UNC path to a server share, or a DFS (Distributed File System) path. Organizations with large, multi-site networks should use DFS as it offers fault tolerance and load sharing.

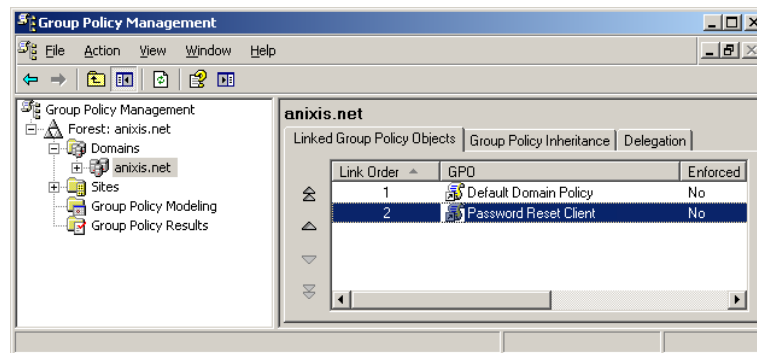
To create a PRC distribution point:

1. Log on to a server as an administrator.
2. Create a shared network folder to distribute the files from.
3. Set permissions on the share so only authorized personnel can modify the folder's contents.
4. Copy APRCIt26.msi into the distribution point folder.
5. Give the "Domain Computers" security group Read access to the APRCIt26.msi file in the distribution point.

Create a Group Policy Object

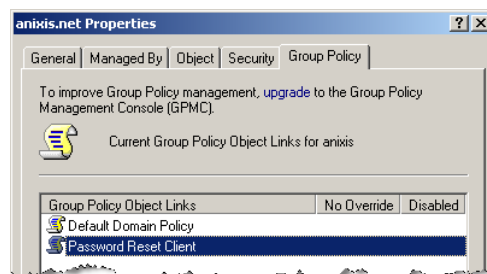
If you are using Windows 2008, 2003, or 2000 with the Group Policy Management Console:

1. Start the Group Policy Management Console.
2. Expand the forest and domain items in the left pane.
3. Right-click the domain root node in the left pane, and then click **Create and Link a GPO Here... (Create a GPO in this domain, and Link it here...** on Windows 2008).
4. Type "Password Reset Client", and then press ENTER.



If you are using Windows 2003 or 2000 without the Group Policy Management Console:

1. Start the Active Directory Users and Computers snap-in.
2. Right-click the domain object in the left pane, and then click **Properties**.
3. Click the **Group Policy** tab, and then click **New**.
4. Type "Password Reset Client", and then press ENTER.

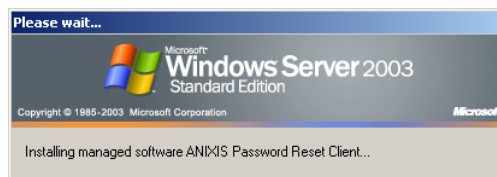


Edit the Group Policy Object

1. Right-click the **Password Reset Client** GPO, and then click **Edit**.
2. Expand the **Computer Configuration, Policies** (Server 2008 only), and **Software Settings** items.
3. Right-click the **Software installation** item, and then select **New > Package**.
4. Type the full UNC path to APRCl26.msi in the Open dialog box. You must enter a UNC path so that other computers can access this file over the network. For example,
\\file server\distribution point share\APRCl26.msi
5. Click **Open**.
6. Select the **Assigned** deployment method, and then click **OK**.
7. Close the Group Policy Object Editor.

Complete the Installation

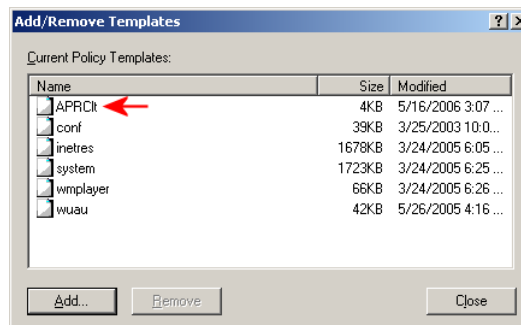
Restart each computer to complete the installation. Windows installs the Password Reset Client during startup, and then immediately restarts the computer a second time to complete the installation.



Configuring the PRC

You must install an Active Directory administrative template to configure the Password Reset Client. The administrative template only has to be installed once. To install the PRC administrative template:

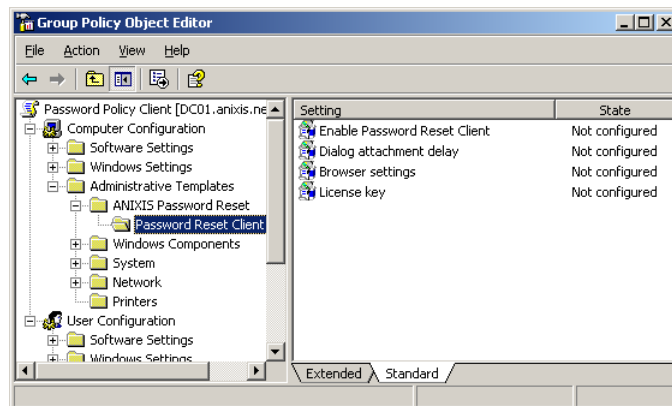
1. Use the Group Policy Management Console, or Active Directory Users and Computers snap-in to display the GPOs linked at the domain level.
2. Right-click the **Password Reset Client** GPO, and then click **Edit**.
3. Expand the **Computer Configuration** item.
4. Expand the **Policies** item if it is visible.
5. Right-click the **Administrative Templates** item, and then click **Add/Remove Templates...**
6. Click **Add...** and then browse to a folder containing the files extracted from APRCIt26.zip.
7. Select **APRCIt.adm**, and then click **Open**.



8. Click **Close**.

To configure the Password Reset Client:

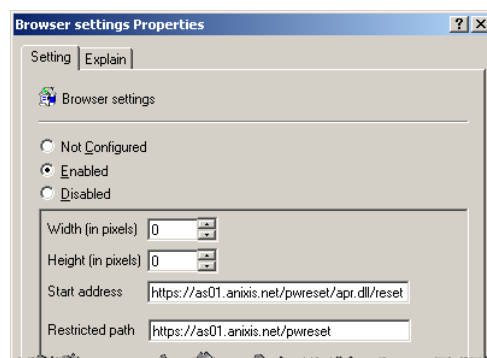
1. Use the Group Policy Management Console, or Active Directory Users and Computers snap-in to display the GPOs linked at the domain level.
2. Right-click the **Password Reset Client** GPO, and then click **Edit**.
3. Expand the **Computer Configuration, Policies (Server 2008 only), Administrative Templates, Classic Administrative Templates (Server 2008 only), ANIXIS Password Reset, and Password Reset Client** items.



The **Enable Password Reset Client** and **Dialog attachment delay** are automatically set by the Password Reset Client, and are normally left in their default (Not configured) state.

For more information about any of the PRC configuration settings, double-click one of the items in the right pane of the Group Policy Object Editor, and then click the **Explain** tab if it is visible.

4. Double-click the **Browser settings** item in the right pane of the Group Policy Object Editor.
5. Select the **Enabled** option.



6. Type the desired **Width** and **Height** of the PRC browser window, or set them to 0 to have the PRC calculate an appropriate size.
7. Type the **Start address** (URL) of the ANIXIS Password Reset system. The URL can point to the APR main menu, or directly to the reset page. Click the **Explain** tab for more information.
8. Type a **Restricted path** (URL) to stop users from following links to other sites. Click the **Explain** tab for more information.
9. Click **OK**.
10. Close the Group Policy Object Editor.

The new PRC configuration is applied to all computers in the domain. This does not happen immediately, as Windows takes some time to apply the changes to Group Policy. You can force an immediate refresh of Group Policy on the local computer with the following command:

Windows 2000: `secedit /refreshpolicy machine_policy`

Windows XP and later: `gpupdate /target:computer`

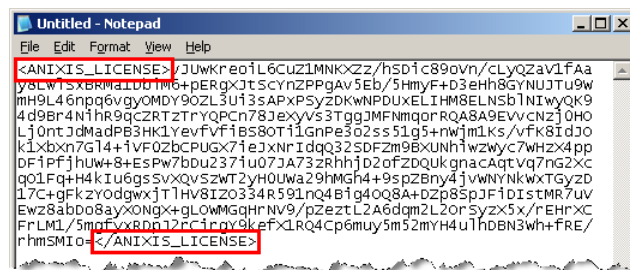
Users may follow links to untrusted sites if the APR user interface or server error pages contain external links. This is potentially dangerous because the Password Reset Client runs under the context of the local system account. Specify a **Restricted path** to stop users from following links to other sites from the Password Reset Client.

Licensing the PRC

The Password Reset Client displays a license warning if it cannot find a valid license key. You can remove this warning by adding a license key to the PRC configuration.

You must reformat the license key before adding it to the PRC configuration. To reformat the license key:

1. Open the ANIXIS Password Reset license e-mail that you received when you purchased ANIXIS Password Reset.
2. Select the license key, starting from `<ANIXIS_LICENSE>` to `</ANIXIS_LICENSE>`
3. Press CTRL + C to copy the license key to the clipboard.
4. Start Notepad, and then press CTRL + V to paste the license key.



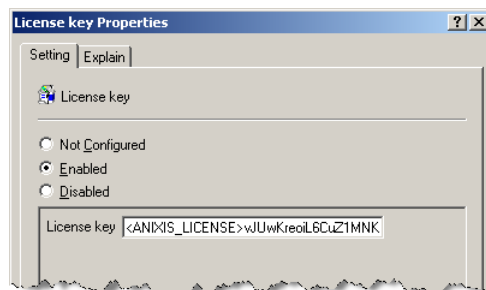
5. Click the **Format** menu in Notepad, and disable the **Word Wrap** option (click **Word Wrap** to toggle its state).
6. Position the cursor at the start of the second line, and then press BACKSPACE to move the line up to the previous line. Repeat until the entire license key is on a single line. Do not delete any other characters.



7. Press CTRL + A, and then CTRL + C to copy the reformatted license key to the clipboard.

To add the license key to the PRC configuration:

1. Use the Group Policy Management Console, or Active Directory Users and Computers snap-in to display the GPOs linked at the domain level.
2. Right-click the **Password Reset Client** GPO, and then click **Edit**.
3. Expand the **Computer Configuration, Policies** (Server 2008 only), **Administrative Templates, Classic Administrative Templates** (Server 2008 only), **ANIXIS Password Reset**, and **Password Reset Client** items.
4. Double-click the **License key** item in the right pane of the Group Policy Object Editor.
5. Select the **Enabled** option.
6. Press TAB, and then CTRL + V to paste the license key.



7. Click **OK**.
8. Close the Group Policy Object Editor.

The license key is applied to all computers in the domain. This does not happen immediately, as Windows takes some time to apply the changes to Group Policy. You can force an immediate refresh of Group Policy on the local computer with the following command:

Windows 2000: `secedit /refreshpolicy machine_policy`

Windows XP and later: `gpupdate /target:computer`

Automatically Closing the PRC Browser Window

You can make a simple change to the APR Web Interface that will automatically close the PRC browser window after a user resets their password or unlocks their account.

1. Open finished.htm (in the Web Interface folder) with Notepad.
2. Replace this HTML form

```
<form method="get" action="../default.htm">  
  <input type="submit" value="Main menu" alt="Main menu">  
</form>
```

with this

```
<form method="get" action="../default.htm">  
  <input type="hidden" name="APRClientAction" value="Close">  
  <input type="submit" value="  OK  " alt="OK">  
</form>
```

3. Save finished.htm, and close Notepad.

The Password Reset Client browser will now close whenever a user clicks the **OK** button.

You can change the button caption to Close instead of OK, but remember that the window only closes when users access APR from the Password Reset Client.

License Agreement

ANIXIS IS WILLING TO LICENSE THIS SOFTWARE ONLY UPON THE CONDITION THAT YOU ACCEPT ALL OF THE TERMS CONTAINED IN THIS SOFTWARE LICENSE AGREEMENT. PLEASE READ THE TERMS CAREFULLY. IF YOU DO NOT AGREE WITH THESE TERMS, THEN ANIXIS IS UNWILLING TO LICENSE THE SOFTWARE TO YOU.

ANIXIS SOFTWARE LICENSE AGREEMENT AND WARRANTY STATEMENT

(End-User Trial Use License With Option For Extended Use/Redistribution Prohibited)

1. The Software.

The Software licensed under this Agreement consists of computer programs, data compilation(s), and documentation referred to as ANIXIS Password Reset, ver.2.x (the "Software").

2. Trial Use.

You are authorized to use the Software for evaluation purposes during a trial use term of thirty (30) days, unless prior to the expiration of the trial use term this license is terminated by You for convenience or terminated by either party for material breach. You have the option to register for full use of the Software at any time by paying the required license fee. Registration will authorize You to use an unlocking key which will convert the Software to full use, subject to the terms and conditions of this agreement. Your use of the Software under this trial use license for any purpose after the expiration of the initial trial use term is not authorized without the prior written consent of ANIXIS. Upon expiration of the limited trial use term, the Software may automatically disable itself. Immediately upon expiration of the limited trial use term, You shall either register for full use of the Software, or destroy all copies of the Software and documentation.

3. Perpetual Term.

If You purchase a perpetual license, then the term of the license granted herein shall be perpetual unless terminated by You for convenience or terminated by either party for material breach. Immediately upon termination of this license for any reason, You shall destroy all copies of the Software and documentation.

4. Subscription Term(s).

If You purchase a subscription license, then the term of this license is on a subscription basis with an initial term of one (1) year, and optional renewal terms of one (1) year each, unless prior to renewal this license is terminated by You for convenience or terminated by either party for material breach. Renewal procedures are available from ANIXIS, and unless such procedures are strictly satisfied, including the payment of any required license fee, Your use of the Software for any purpose after the expiration of the subscription term is not authorized. Upon expiration of the subscription term, the Software may automatically disable itself. Immediately upon expiration or termination of this license for any reason, You shall destroy all copies of the Software and documentation.

5. License Grant.

You are granted non-exclusive rights to install and use the Software on any computer and/or transmit the Software over a computer network, provided that You acquire and dedicate a licensed copy of the Software for each user who may access the Software. A license for the Software may not be shared or used concurrently by different users. You may purchase additional licenses for the Software from time to time. This Agreement shall take precedence over any purchase order for additional licenses, and any conflicting, inconsistent, or additional terms in such purchase orders shall be null and void. You may copy the Software for archival purposes, provided that all copies must contain the original Software's proprietary notices in unaltered form.

6. Restrictions.

You may not: (i) permit others to use the Software, except as expressly provided above for authorized network use; (ii) modify or translate the Software; (iii) reverse engineer, decompile, or disassemble the Software, except to the extent this restriction is expressly prohibited by applicable law; (iv) create derivative works based on the Software; (v) merge the Software with another product; (vi) copy the Software, except as expressly provided above; or (vii) remove or obscure any proprietary rights notices or labels on the Software.

7. Transfers.

You may not transfer the Software or any rights under this Agreement without the prior written consent of ANIXIS, which consent shall not be unreasonably withheld. A condition to any transfer or assignment shall be that the recipient agrees to the terms of this Agreement. Any attempted transfer or assignment in violation of this provision shall be null and void.

8. Ownership.

ANIXIS and its suppliers own the Software and all intellectual property rights embodied therein, including copyrights and valuable trade secrets embodied in the Software's design and coding methodology. The Software is protected by Australian copyright laws and international treaty provisions. This Agreement provides You only a limited use license, and no ownership of any intellectual property.

LIMITED WARRANTY STATEMENT; LIMITATION OF LIABILITY. ANIXIS warrants only to You that the Software shall, in unmodified form, perform substantially in accordance with accompanying documentation under normal use for a period of thirty (30) days from the purchase date. The entire and exclusive liability and remedy for breach of this Limited Warranty shall be, at ANIXIS's option, either (i) return of the amount received by ANIXIS for the Software, or (ii) replacement of defective Software and/or documentation. ANIXIS AND ITS SUPPLIERS AND RESELLERS SPECIFICALLY DISCLAIM THE IMPLIED WARRANTIES OF TITLE, NON-INFRINGEMENT, MERCHANTABILITY, FITNESS FOR A PARTICULAR PURPOSE, SYSTEM INTEGRATION, AND DATA ACCURACY. THERE IS NO WARRANTY OR GUARANTEE THAT THE OPERATION OF THE SOFTWARE WILL BE UNINTERRUPTED OR ERROR-FREE, OR THAT THE SOFTWARE WILL MEET ANY PARTICULAR CRITERIA OF PERFORMANCE, QUALITY, ACCURACY, PURPOSE, OR NEED, EXCEPT AS EXPRESSLY PROVIDED IN THE LIMITED WARRANTY. THIS DISCLAIMER OF WARRANTY CONSTITUTES AN ESSENTIAL PART OF THIS AGREEMENT. NO USE OF THE SOFTWARE IS AUTHORIZED HEREUNDER EXCEPT UNDER THIS DISCLAIMER. No action for the above Limited Warranty may be commenced after one (1) year following the expiration date of the warranty. To the extent that this Warranty Statement is inconsistent with the jurisdiction where You use the Software, the Warranty Statement shall be deemed to be modified consistent with such local law. Under such local law, certain limitations may not apply, and You may have additional rights which vary from jurisdiction to jurisdiction. For example, some states in the United States and some jurisdictions outside the United States may: (i)

preclude the disclaimers and limitations of this Warranty Statement from limiting the rights of a consumer; (ii) otherwise restrict the ability of a manufacturer to make such disclaimers or to impose such limitations; or (iii) grant the consumer additional legal rights, specify the duration of implied warranties which the manufacturer cannot disclaim, or prohibit limitations on how long an implied warranty lasts.

INDEPENDENT OF THE FORGOING PROVISIONS, IN NO EVENT AND UNDER NO LEGAL THEORY, INCLUDING WITHOUT LIMITATION, TORT, CONTRACT, OR STRICT PRODUCTS LIABILITY, SHALL ANIXIS OR ANY OF ITS SUPPLIERS BE LIABLE TO YOU OR ANY OTHER PERSON FOR ANY INDIRECT, SPECIAL, INCIDENTAL, OR CONSEQUENTIAL DAMAGES OF ANY KIND, INCLUDING WITHOUT LIMITATION, DAMAGES FOR LOSS OF GOODWILL, WORK STOPPAGE, COMPUTER MALFUNCTION, OR ANY OTHER KIND OF COMMERCIAL DAMAGE, EVEN IF ANIXIS HAS BEEN ADVISED OF THE POSSIBILITY OF SUCH DAMAGES. THIS LIMITATION SHALL NOT APPLY TO LIABILITY FOR DEATH OR PERSONAL INJURY TO THE EXTENT PROHIBITED BY APPLICABLE LAW.

IN NO EVENT SHALL ANIXIS'S LIABILITY FOR ACTUAL DAMAGES FOR ANY CAUSE WHATSOEVER, AND REGARDLESS OF THE FORM OF ACTION, EXCEED THE AMOUNT OF THE PURCHASE PRICE PAID, IF ANY, FOR THE SOFTWARE LICENSE.

EXPORT CONTROLS. You agree to comply with all local laws in Your jurisdiction which might impact Your right to import, export or use the Software, and You represent that You have complied with any regulations or registration procedures required by applicable law to make this license enforceable.

MISCELLANEOUS. This Agreement constitutes the entire understanding of the parties with respect to the subject matter of this Agreement and merges all prior communications, representations, and agreements. This Agreement may be modified only by a written agreement signed by the parties. If any provision of this Agreement is held to be unenforceable for any reason, such provision shall be reformed only to the extent necessary to make it enforceable. This Agreement shall be construed under the laws of the State of New South Wales, Australia, excluding rules regarding conflicts of law. This Agreement will not be governed by the United Nations Convention on Contracts for the International Sale of Goods, the application of which is expressly excluded. The parties have requested that this Agreement and all documents contemplated hereby be drawn up in English. Les parties aux presentes ont exige que cette entente et tous autres documents envisages par les presentes soient rediges en anglais.

U.S. GOVERNMENT END USERS: If the Software and documentation is acquired by or for the United States Government then it is provided with RESTRICTED RIGHTS. Use, duplication, or disclosure by the United States Government is subject to restrictions as set forth in subparagraph (c)(1)(ii) of The Rights in Technical Data and Computer Software clause at DFARS 252.227-7013, or subparagraphs (c)(1) and (2) of the Commercial Computer Software-Restricted Rights at 48 CFR 52.227-19 or clause 18-52.227-86(d) of the NASA supplement to the FAR, as applicable. Manufacturer is ANIXIS, 9 Monterey Terrace, Glenmore Park, NSW 2745 Australia.